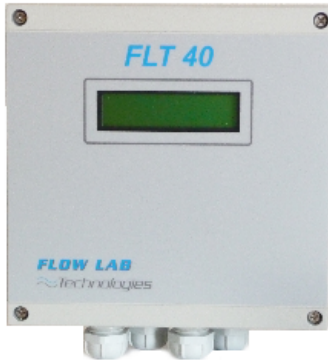


FLT01 probe

ELECTROMAGNETIC FLOWMETER INSERTION TYPE

For Pipes Under pressure



- Single point flow measurement for under pressure pipes *
- Can measure flow for all kinds of conductive fluids \geq at 5μ Siemens
- For all kinds of pipes material diameters between 40 and 5,000mm (1 1/2" to 200")
- Easy installation using 25mm (1") standard taping systems
- Operate with FLT 40 converter

*Open channel compatible



Steel pipes ND 400mm



Concrete pipe ND 1,200mm



Concrete pipe ND 1,200mm



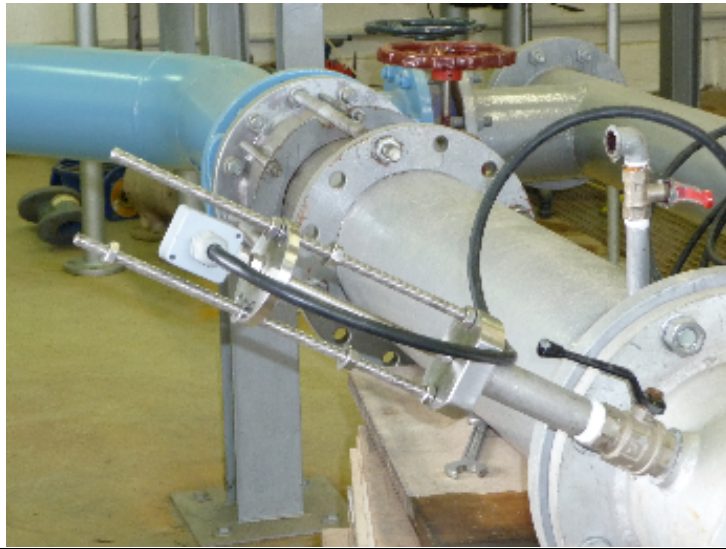
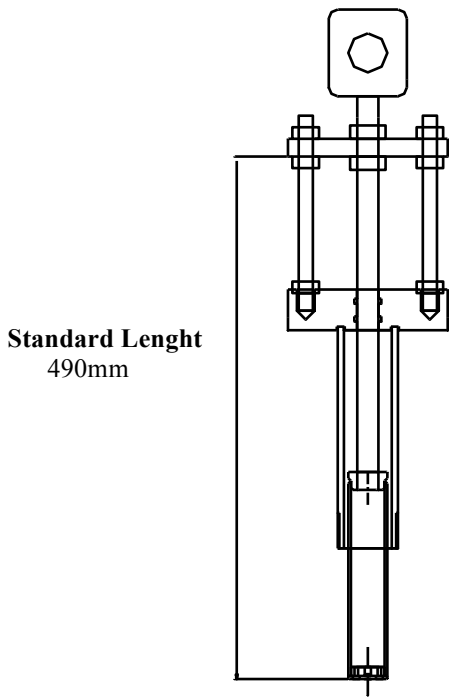
Concrete pipe ND 2,800 mm



A **FLOW-LAB**
Technologies

www.boontec.com.au

Technical Features



The **FLT 01** is a **bi-directional intrusive electromagnetic probe** for measuring accurate flow in **all kind of conductive fluids** ($\geq 5 \mu\text{S}$) and all kind of pipes material, under pressure.
(Version **FLT01oc** available for **open channels**)

It's given significant advantages compares to traditional full bore sensors:

- No interruption of supply.
- Good "Value for money".
- None or reduced civil works (e.g. Manholes).
- Easy installation using standard under pressure tapping systems
- Suitable installation on pipes from ND 40 (1 ½") up to ND 5000 (200") and more.
- Standard probes mountings are compatible with tapping connectors (welded/thread) or saddles from the shelves using 1" standard stop or tapping valves for insertion.

Key figures:

- Body's probe \varnothing 22 mm
- Body's material: 316 L stainless steel
- Electrodes: 316 L stainless (passive)
- Standard Operating pressure 25 bars
- Working temperature -20 to $+70^{\circ}\text{C}$
- IP 68 grade

Performances

- Measure bandwidth: 0.1 m/s to 10 m/s
- Accuracy: 2 % from 0.1m/s to 10 m/s
- Linearity: 0.1 % (automatic zero)