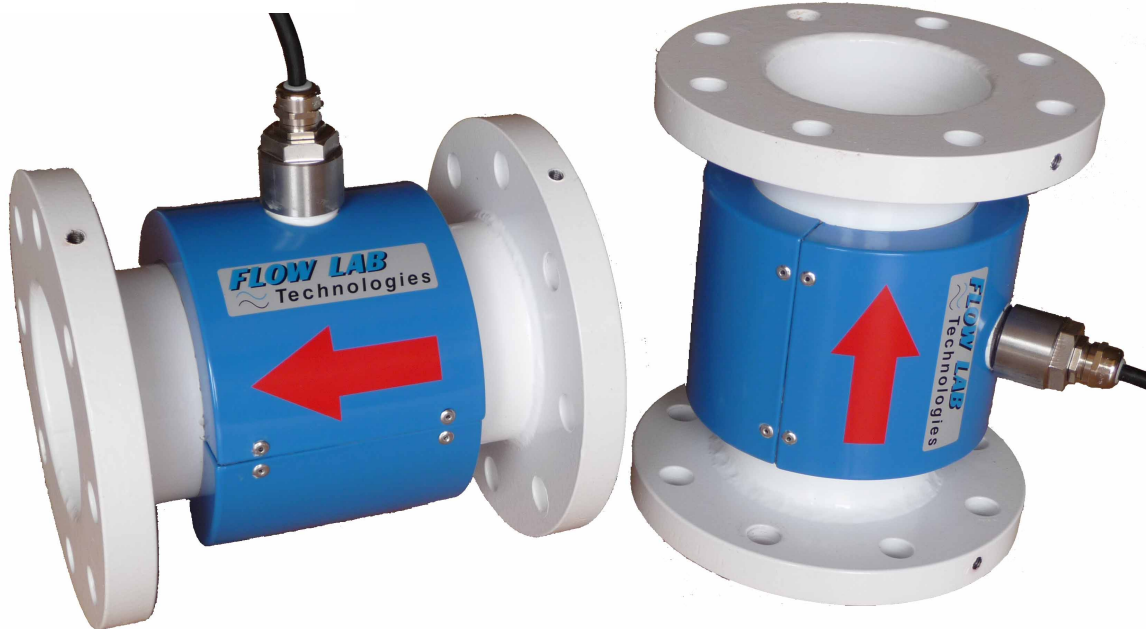
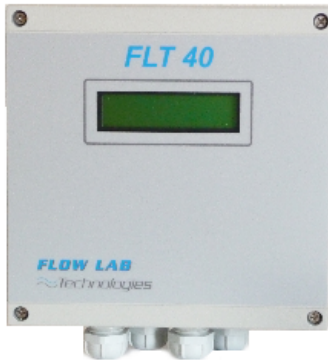


FLT02 probe

ELECTROMAGNETIC FLOWMETER

Full Bore for Pipes Under pressure



- **High accuracy flow measurement for under pressure pipes ***
- **Can measure flow for all kinds of conductive fluids \geq at 5μ Siemens**
- **Standard Diameter for pipes ND 20 to 350mm (1 ½" to 200")**
- **No flow disturbance or head losses**
- **Operate with FLT 40 converter**



A **FLOW-LAB**
Technologies

www.boontec.com.au

The sensor **FLT 02 M** is an electromagnetic **full bore sensor** for **high accuracy** flow measurement **in all kind of conductive fluids**.

Technical Features

The FLT 40 converter can be fixed directly or remotely deported

DN 20 to 2000 mm (STD 20 to 350mm)

Body material :304 L stainless steel

Flanges :Steel (standard)

Electrodes : 316 L stainless steel passivated measuring -IP 68 grade

Inner lining : Rilsan food contact approval (NF -A 49713)

painting :Steel lid epoxy

Performances

Flow rate : 0,01 to 15 m/s

Accuracy : 0, 5 % (0, 2 % option) of the measure between 0,01 to 10 m/s

Repeatability : 0,2 % on 5 years

Linearity : 0,1 % (automatical zero)

Options

Pressure >25 bar (NP 40)

Inner lining : PTFE , Néoprène, Halar

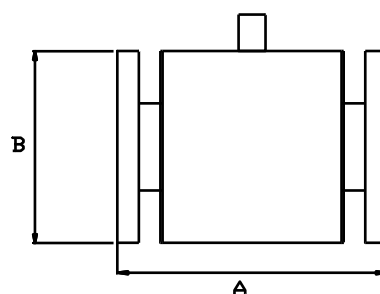
Electrodes material : Hastelloy, Tantale, ...

GND Electrodes

Removable electrode on line

Empty pipe detection by Electrode sensor

Stainless steel sensor



DN	A (mm)	B (mm)	Poids Weight	DN	A (mm)	B (mm)	Poids Weight
20	200	105	8	400	600	565	90
25	200	115	8.5	450	600	615	120
32	200	140	9	500	600	670	170
40	200	150	10	600	700	780	280
50	200	165	11	700	700	895	400
65	200	185	13	800	800	1015	580
80	200	200	15	900	900	1120	750
100	250	220	17	1000	1000	1230	820
125	250	278	19	1200	1200	1455	1000
150	300	285	22	1400	1400	1675	1400
200	350	340	35				
250	450	395	55				
300	500	445	65				
350	500	505	75				